

Threshold Adjustment

Machine: CrystalPress-II



14140 NE 200th St.
Woodinville, WA. 98072
(425) 398-8282

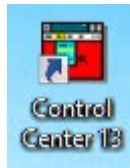
P/N: 000000R0

1 Initial Setup

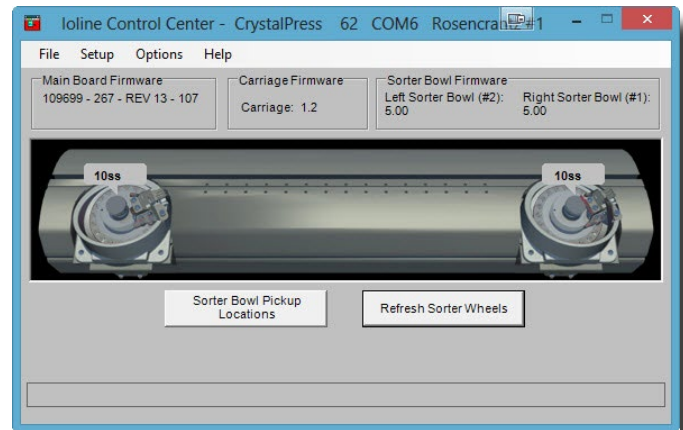
Make sure the machine is connected to the computer, powered on and has a green light on the keypad.

2 Control Center

Make sure you have no other programs running and open the Ioline Control Center software.

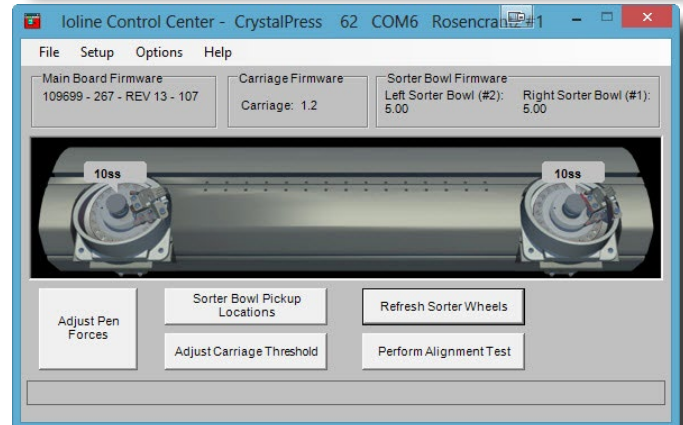


Control Center Icon



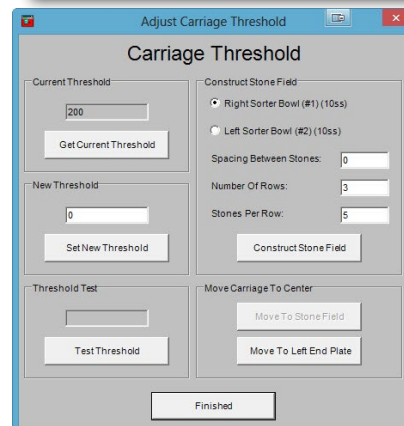
3 Threshold Button

On the computer keyboard press and hold 'Ctrl' and 'Alt' then press the letter 'P' and release all the keys. The extra buttons should show up in the main Control Center Window.



4 Threshold Setting

Click on the 'Adjust Carriage Threshold' button. The Adjust Carriage Threshold window opens.

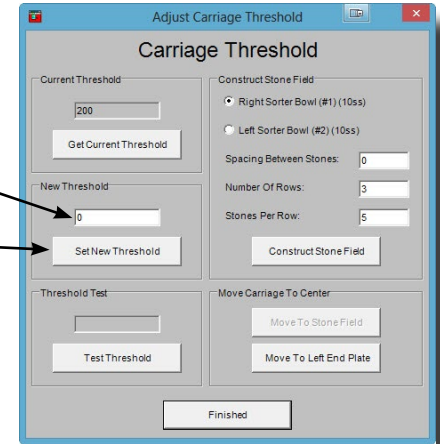


5 Changing the Threshold

Depending on the backing color of your rhinestone, you can change the threshold setting to detect the stone better. For dark backed stones raise the threshold number. For light backed stones lower the threshold number. Once done, click the 'Set New Threshold' button for the changes to take effect.

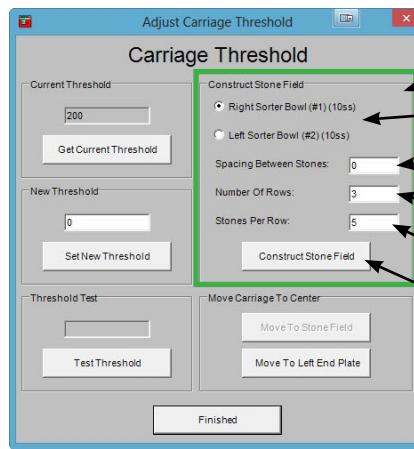
Type new threshold number here.

Then click 'Set New Threshold'



6 Test the setting

You can test the new setting by creating a stone field in the 'Construct Stone Field' section.



Create Stone Field section

Set the sorter bowl you want to test.

Set the spacing between stones. (Minimum value: 18)

Set the number of rows

Set the number of stones per row

Start the test on the CrystalPress

7 Finalizing

If the machine acts normally and doesn't stop while placing the stone field, the threshold setting is good. Press the 'Finished' button to close the window and close the Control Center.

If the machine places a stone and stops, or tries to keep placing the stone in the same place, or places the stone in the cleaning area (on the sides of the transfer sheet), adjust the threshold again until the machine places stones normally (without stopping).

Note: If you reach 255 for the threshold setting and the machine is still not placing stones correctly, the CrystalPress-II will not work with those stones and a substitute stone should be found.

Disclaimer

The threshold adjustment in the Ioline Control Center is a hidden setting because changing the number can adversely effect how the machine operates. A new threshold setting might work fine for one stone, but all other stones after that can be effected. Only adjust this setting for the one stone you need to place. Once that stone is placed and done, it is recommended that you reset the default threshold setting of 200. It is recommended that you use Preciosa, Swarovski or Ioline rhinestones in the CrystalPress-II to avoid changing the threshold number.