

CPII Replacement Large Y Transmission Product P/N109280

Proc. P/N 111212 Rev 0



14140 NE 200th St.
Woodinville, WA 98072
1.425.398.8282
www.ioline.com

IMPORTANT:
You must download the correct FirmWare for the large Y transmission after changing the large motor Y transmission.

FW Number is: 109699 272.4

Large Y transmission part number is: 109280 (Sent with this procedure).

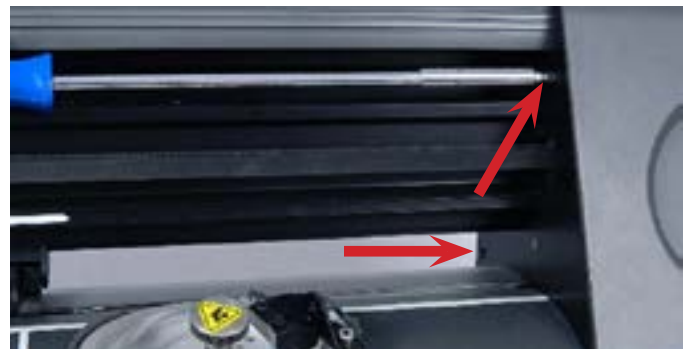
Step 1: Firmware change. Read the above.



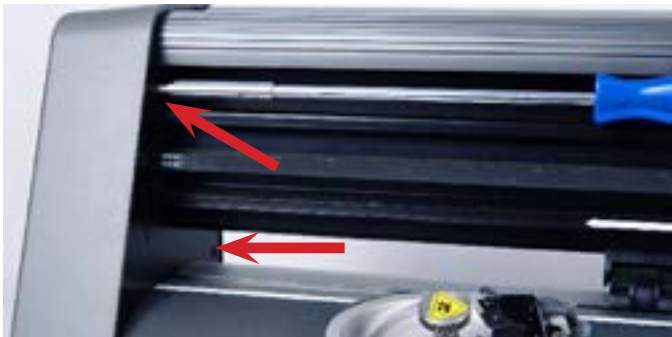
Step 2: Tools needed: Phillips screwdriver, a 9/64" allen wrench, a 11/32" socket wrench with a 6" extension and a tool alignment tip (arrow).



Step 3: After you have sent the new Firmware in step 1, turn off the CPII. Un-plug the power cord and the communication cable.



Step 4: Remove the right end cover by unscrewing the (2) screws (red arrows) and the (1) silver screw on the bottom right cover. This will give you access to the Y motor.



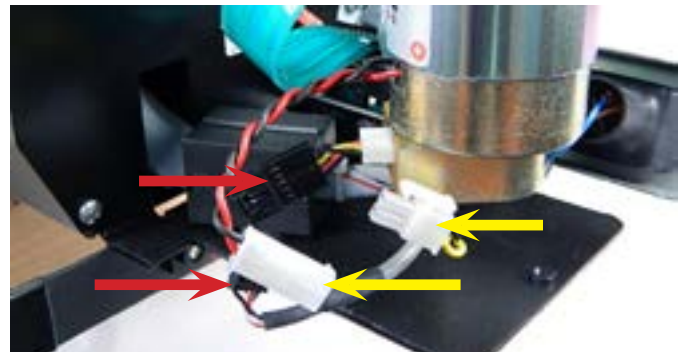
Step 5: Remove the left end cover by unscrewing the (2) screws (red arrows). This will give you access to the tensioner.



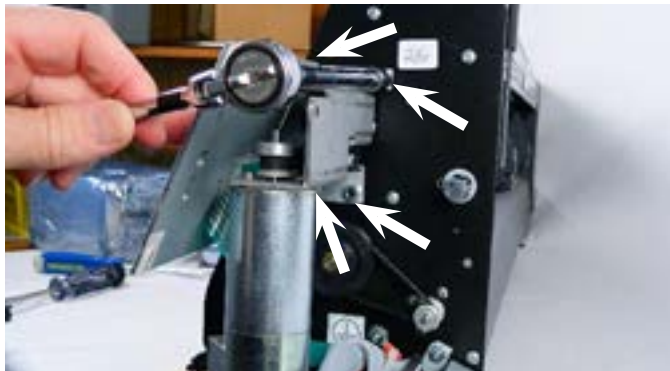
Step 6: You need to loosen the Y belt. Use the 9/64" allen wrench and turn counter clockwise 2 full rotations.



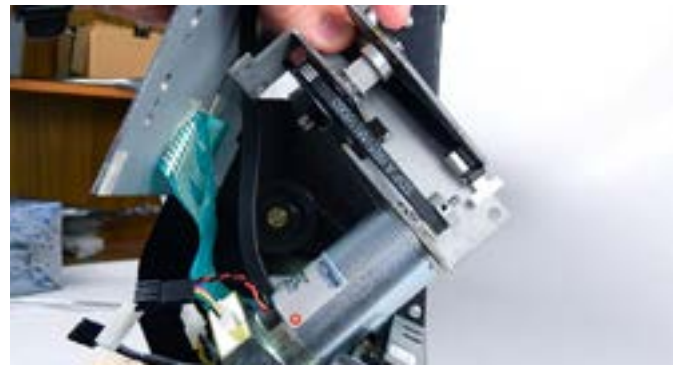
Step 7: **With the carriage cover removed** (see step 17 for location of screws) and the Y belt loosened (arrow), you can remove the belt from the carriage as shown. **NOTE: No need to remove the carriage.**



Step 8: Separate both the power clip (yellow arrows), and the communication clip (red arrows).



Step 9: Remove all (4) locking nuts from the Transmission bracket.



Step 10: Once the (4) locking nuts are removed, you can pull the Y transmission and the bracket away from the CPII while you un-thread the Y belt from the pulley. Place the Y transmission aside.



Step 11: With the new Large Y motor transmission, thread the Y belt around the top pulley (blue arrow), then through the rectangle hole in the right end plate (red arrow). **NOTE: Make sure that the belt is NOT twisted.**



Step 12: With one hand holding the Y transmission, pull the Y belt tight with the other hand. Align and place the new Large Y motor transmission onto the 4 threaded studs. Hand thread one locking nut to hold. **NOTE: You may need to move the green ribbon cable out of the way from the studs (yellow arrow).**



Step 13: When all (4) locking nuts have been hand threaded onto the studs, use the 11/32" socket wrench with the 6" extension and tighten all (4) locking nuts securely.



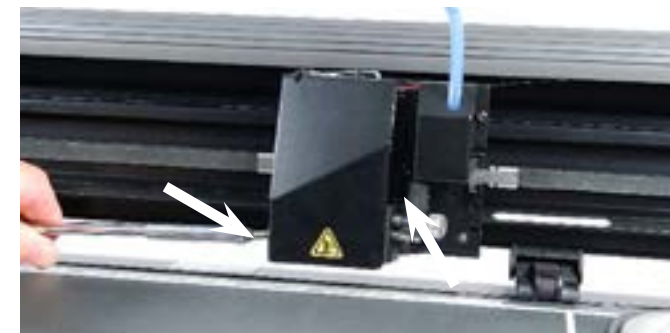
Step 14: Press the (2) white power clips together and the (2) black communication clips together (arrows). You will hear a clicking sound when successful.



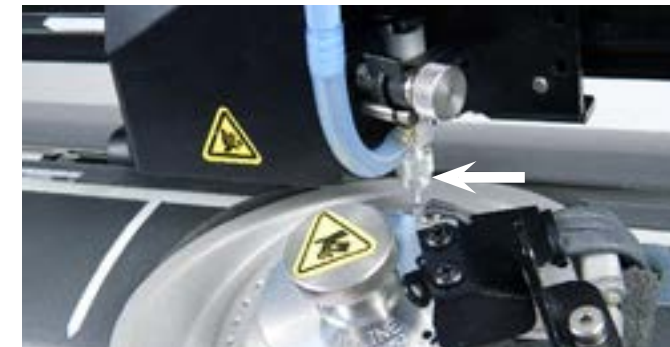
Step 15: You need to re-attach the T-shape clips to the carriage base plate as shown. **NOTE: Make sure that the tensioner is upright (step 16).**



Step 16: Once both ends of the Y belt are attached to the carriage base plate, **NOTE: Make sure that the tensioner is placed in the the (3) indents on the end plate.** turn the tensioner set screw with the 9/64" allen wrench 2 full turns clockwise to re-tighten.



Step 17: Place the carriage cover back on and tighten the (2) screws (arrows). **NOTE: Plug in both the power and the communication cable back in the CPII and turn on.**



Step 19: Remove the Pick-up tool tip and place the alignment tool tip (arrow) on the c-stick body in the jaw and tighten the clamp.



Step 21: Remove the tool tip and place the pick up tip back on (arrow). You will need to do a quick test with 6ss or 10ss stones to confirm the ideal location.

IMPORTANT: Download the alignment procedure for the CPII. This will walk you through the next few steps on the proper way to align correctly and quickly. This MUST be done after changing out the Y transmission to ensure proper pick-up and placement of the stones.

Step 18:



Step 20: Your goal is to have the tip fully insert into the hole in the pocket. **NOTE: The procedure for aligning both bowls will guide you through all the steps.**



Step 22: The carriage will move over the selected bowl and pick up the stone and place it on the media. You are looking for the c-stick to be centered on the stone. Once you are satisfied with the alignment with both bowls, Re-cycle the power. You are now ready to run the CPII..... **FINISHED**



14140 NE 200th St.
Woodinville, WA 98072
1.425.398.8282
www.ioline.com