

Installation of a new CrystalPress-II Carriage

Product P/N 110687

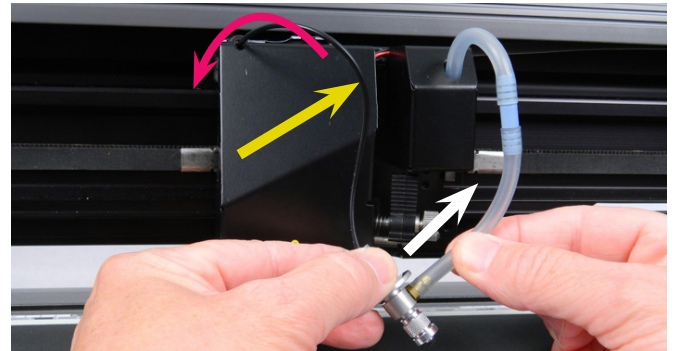
Procedure P/N 110908 Rev 0

IOLINE™

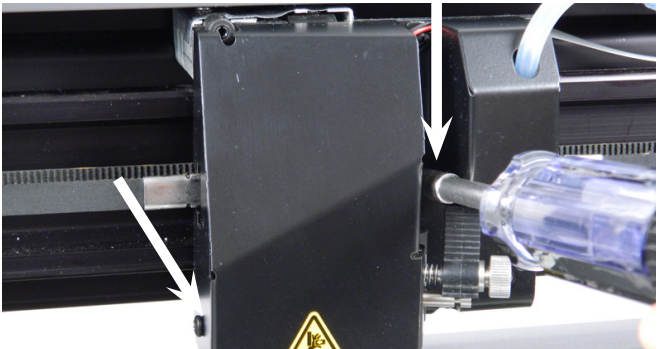
14140 NE 200th St.
Woodinville, WA. 98072
(425) 398-8282
www.ioline.com



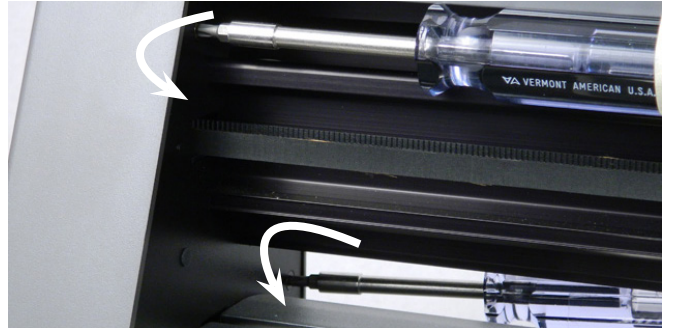
Step 1. Turn off and un-plug machine. Handling the carriage requires an anti-static wrist strap. (Included in kit)



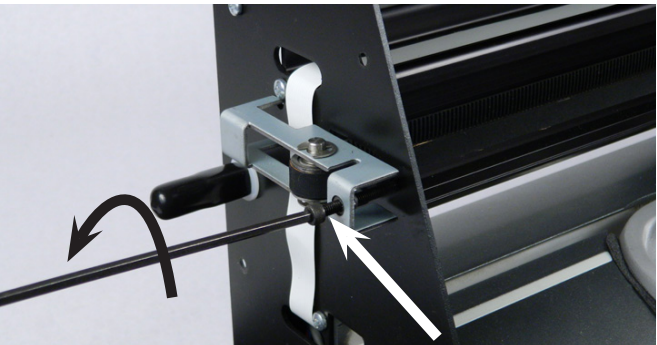
Step 2. Remove the C-stick from the jaw. Pull out the hose from the C-stick (white arrow), turn the knurled knob counter clockwise to loosen (red Arrow), then pull out the optic cable (yellow arrow).



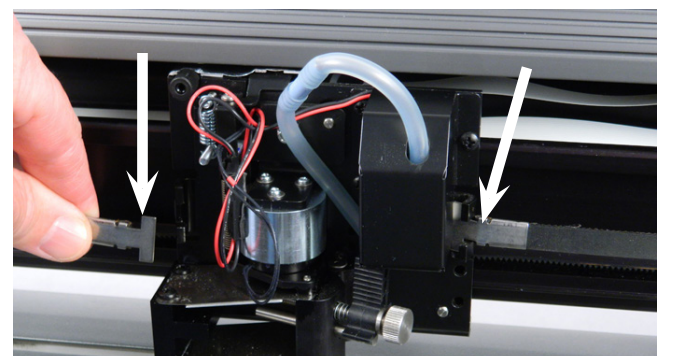
Step 3. Remove the carriage cover. (2 screws).



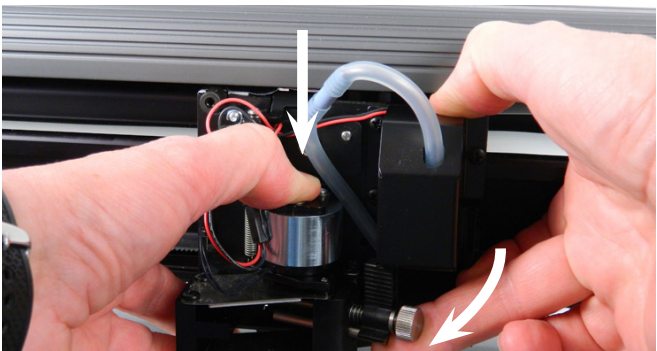
Step 4. Remove left end cover. (2 Screws) One in the front, and one in the back above the platen as shown.



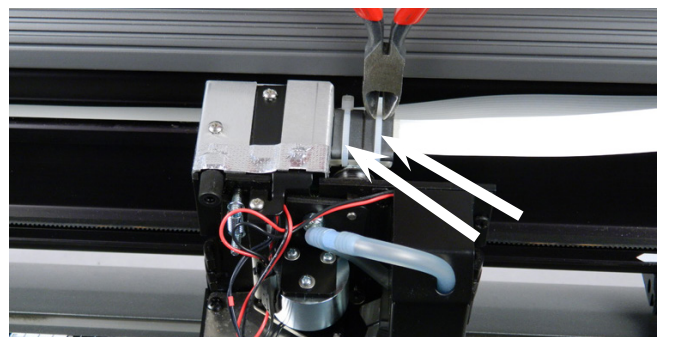
Step 5. With a hex key (9/64), loosen the (Y) carriage belt by turning the tensioner screw 2 full counter clockwise turns. You can use a pliers if you do not have a hex key.



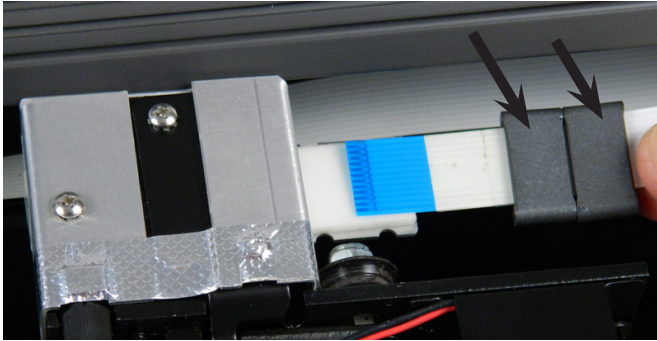
Step 6. Remove the (Y) belt from the carriage on both sides. Arrows show the Y belt clips. Left side first, then the right side. Hold the carriage still with the other hand for stability.



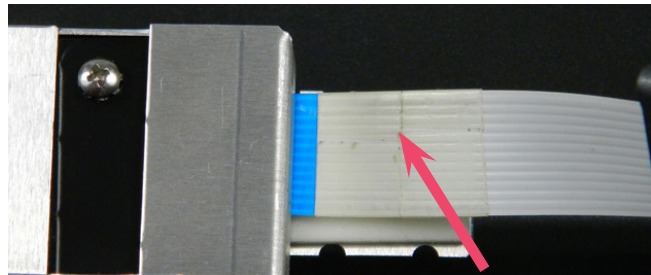
Step 7. Remove the carriage by pressing down on the pump and silver coil cover (spring loaded). While still pressing down, pull out the bottom of the carriage towards you.



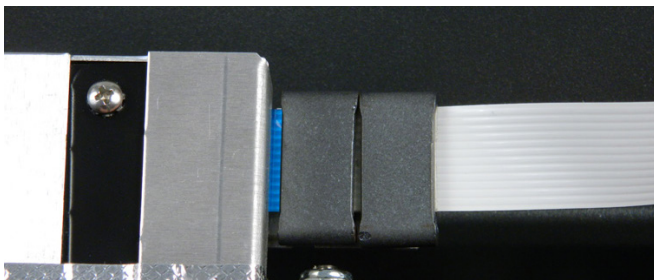
Step 8. With the carriage pulled out to the point shown, cut the 2 cable ties holding the ribbon cable and ferrites. Slide the ferrites back along the ribbon cable. Do NOT remove the ferrites.



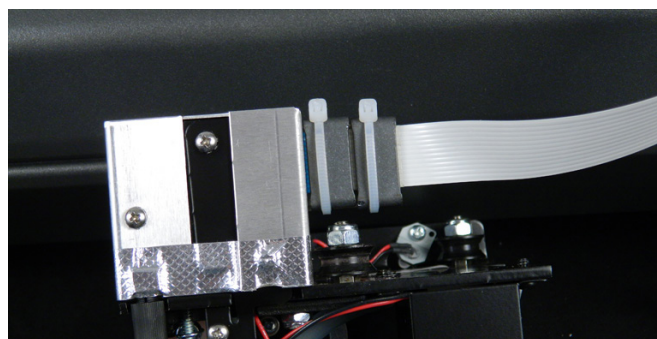
Step 9. Hold the white ribbon cable and gently pull straight out until you see the entire blue section of the cable. Set aside the old carriage (the old carriage will go into the static bag later). **NOTE: The (2) ferrites (arrows) remain on the ribbon cable.**



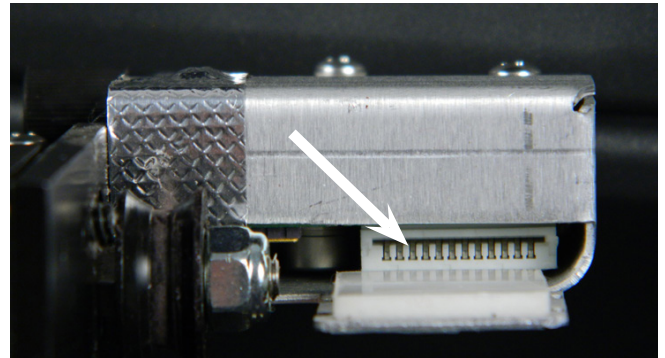
Step 11. Remove the new carriage from the bag. With the new carriage, insert the ribbon cable (NOTE: blue side up) into the connector. The photo shows the amount of blue that you should see when the cable is inserted all the way in. The (red) arrow is where you can grip the ribbon cable for insertion



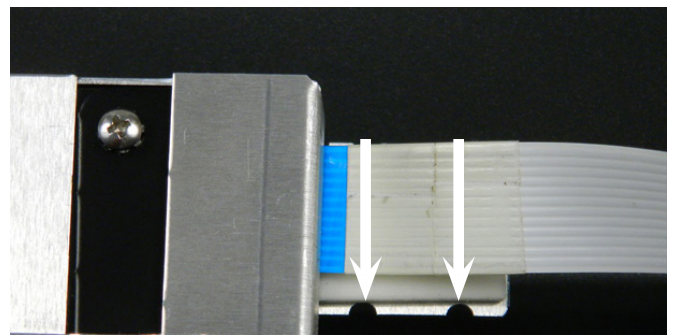
Step 13. With the ribbon cable fully inserted, slide both ferrites in as shown above.



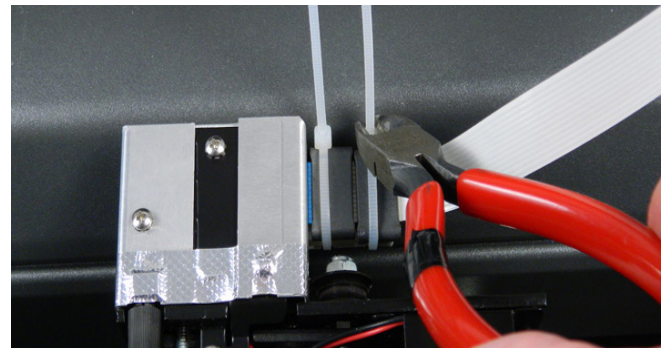
Step 15. Both of the tie wraps have been trimmed. This is exactly how it should appear before you place the carriage on the traverse.



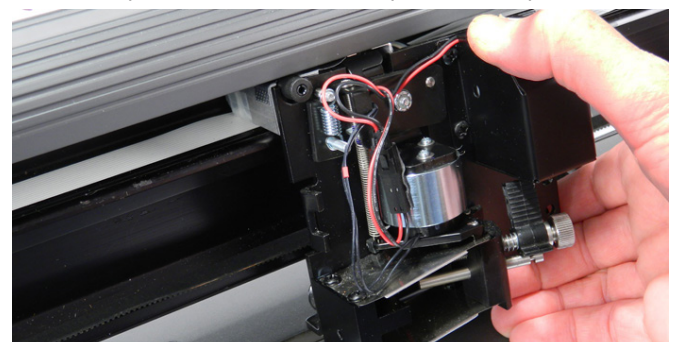
Step 10. The arrow points to the connector that the ribbon cable needs to plug into for the new carriage.



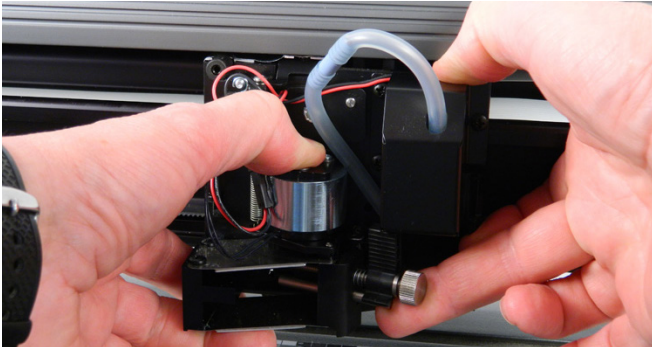
Step 12. The arrows show the location (notches) where the cable ties are placed. These securely hold the ties from slipping.



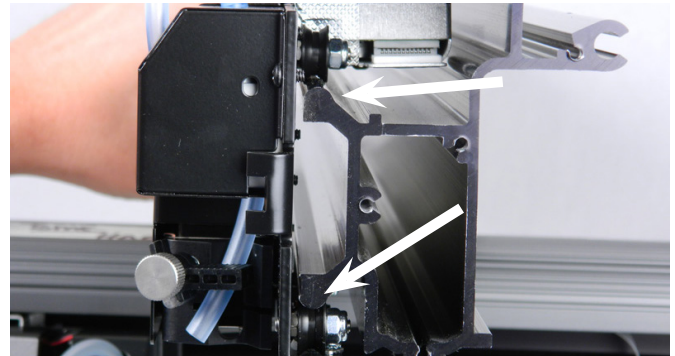
Step 14. Place cable ties around the ferrites and the silver base plate (ties must seat in the notches) then pull tight. You MUST position the nubs and clip off the wraps as shown.



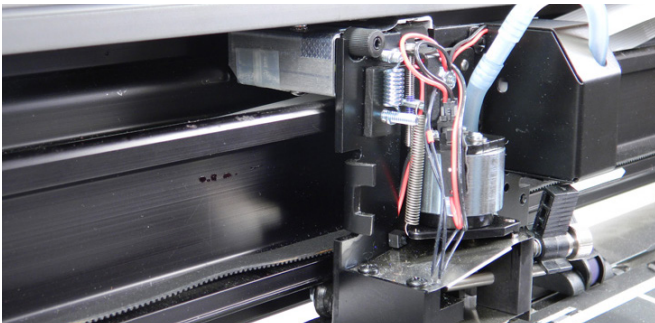
Step 16. You are now ready to place the carriage on the traverse. Make sure the belt is behind the carriage. Push the top of the carriage into the channel between the top cover and the traverse until the top wheel rests on the top rail of the traverse.



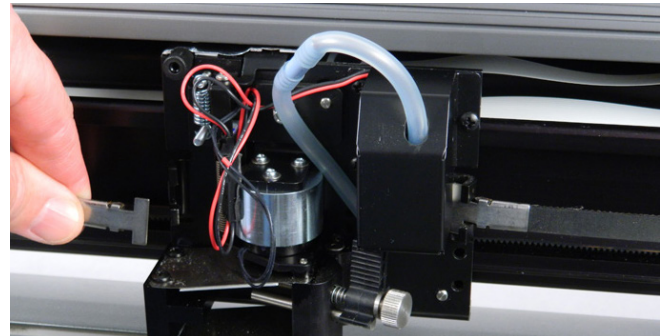
Step 17. Using both hands, press down (spring action) and allow the bottom 2 wheels to go under the bottom rail of the traverse.



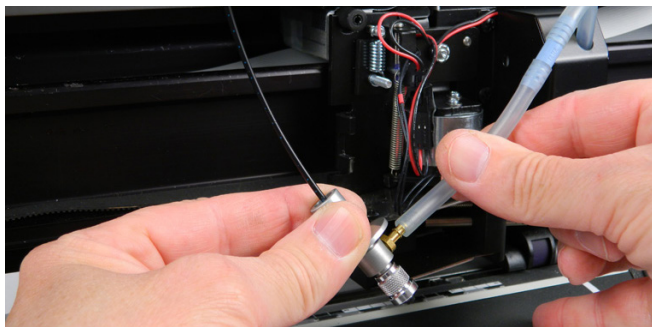
Step 18. The above photo is a cross section to show how the wheels correctly appear on the top and bottom rails of the traverse.



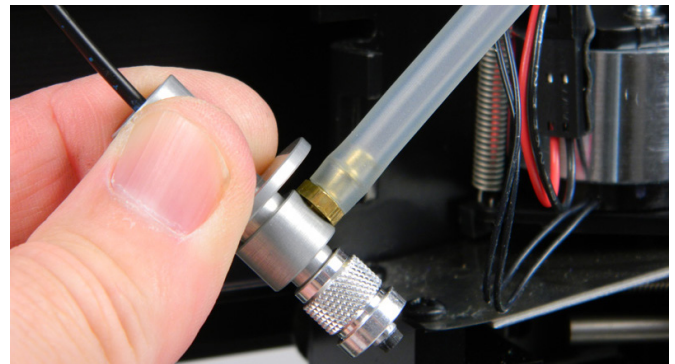
Step 19. This is how the carriage should appear when all 3 wheels are correctly riding on the upper and lower rails. You should be able to slide the carriage smoothly left to right. NOTE: Belt is behind the carriage.



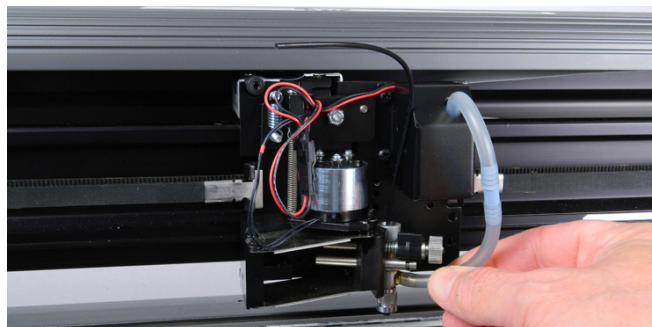
Step 20. Re-attach both belt clips to the carriage as shown above. Hold the carriage with the other hand for stability. NOTE: Check that the belt is NOT twisted.



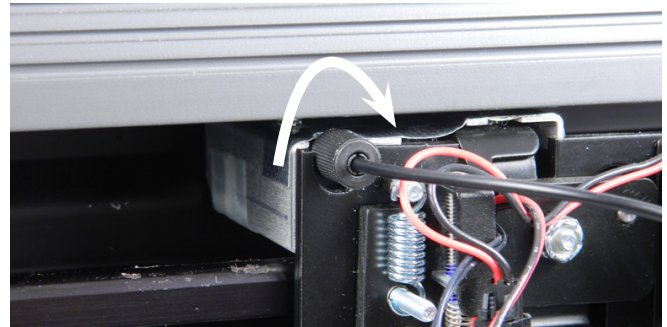
Step 21. Place the vacuum tube onto the brass fitting of the C-stick securely. (Press all the way on).



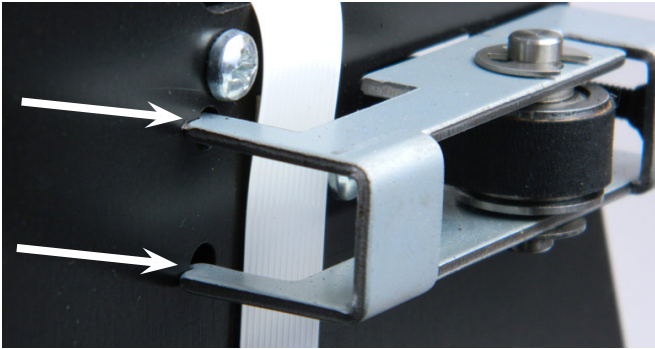
Step 22. The vacuum hose should be pressed all the way in as shown.



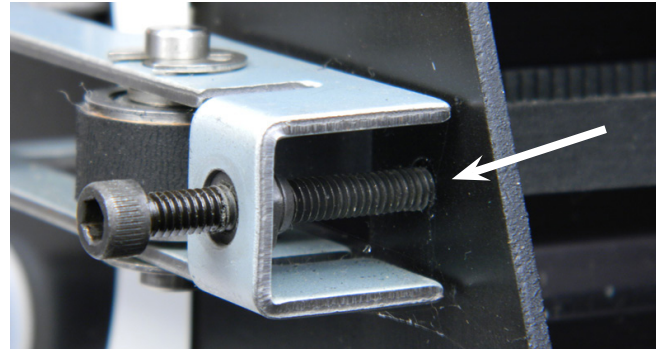
Step 23. Place the C-stick into the jaw, close the clamp, and tighten the thumbscrew. NOTE: Make sure that the clamp is securely holding the C-stick body in the jaw.



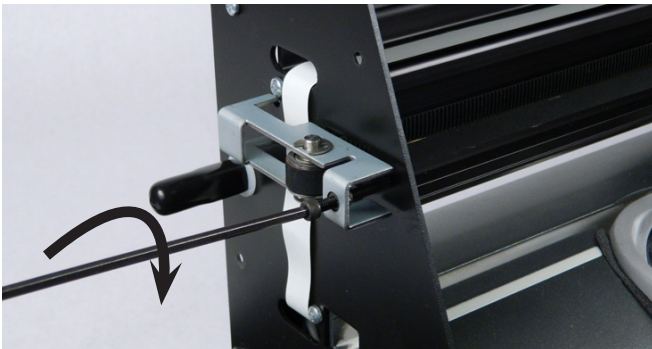
Step 24. Place the fiber optic cable all the way in (1/2 inch) into the receptor and tighten clockwise.



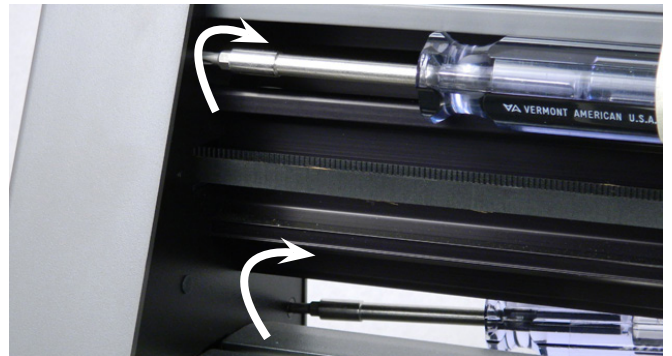
Step 25. This photo shows how the 2 arms on the tensioner are seated into the 2 holes on the left end plate before you tighten the set screw.



Step 26. This photo shows how the tensioner set screw is seated while tightening the Y belt.



Step 27. Tighten the Y belt at the tensioner by turning 2 full turns clockwise.



Step 28. Re-attach the left end cover with 2 screws.



Step 29. Install the carriage cover. (2) screws. Front as shown and the left side (Arrow).



Step 30. Perform the carriage procedure to ensure the pick-up locations are correct. Contact Ioline customer support for assistance if necessary. You are now ready to print... FINISHED.