

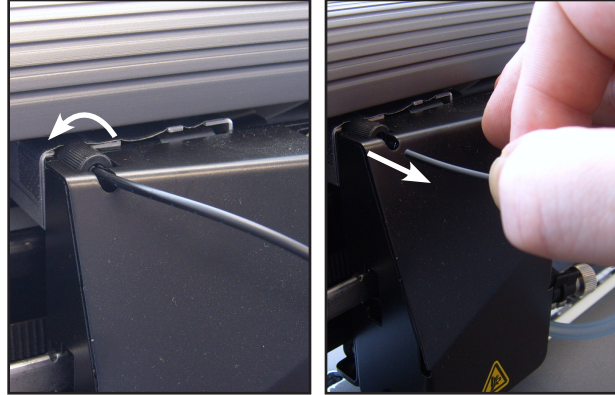
# Carriage Filter Replacement

**IOLINE™**  
14140 NE 200th St.  
Woodinville, WA. 98072  
(425) 398-8282

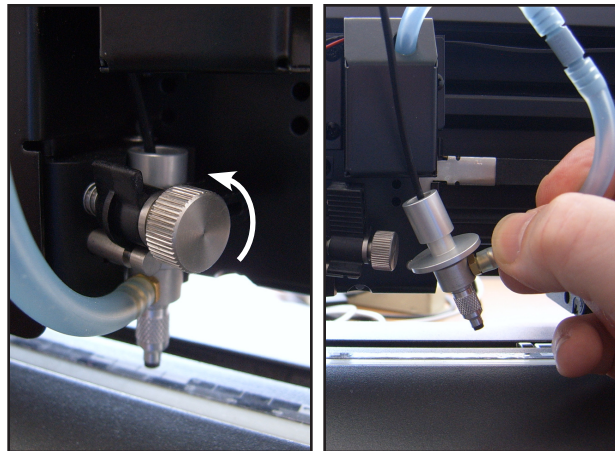
## 1 Remove the C-Stick

Turn the fiber optic cable nut to the left to loosen. Remove the cable from the socket.

*If the nut is too tight follow the carriage cover removal procedure at the end of this guide.*



Turn the C-Stick thumbscrew to the left to loosen. Remove the C-Stick from the carriage jaw as shown.



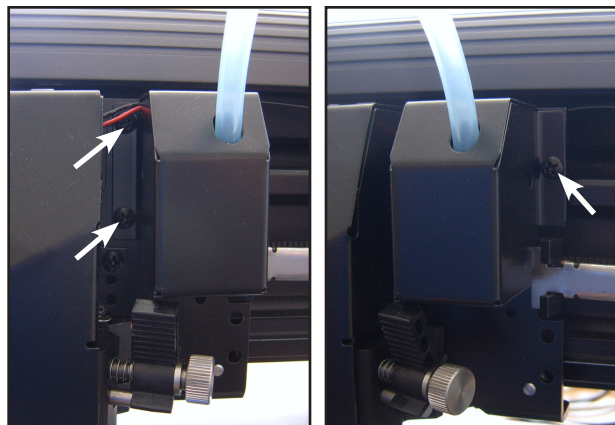
## 2 Remove the C-Stick Air Tube

Gently pull the air tube from the fitting at the bottom of the C-Stick. Set the C-Stick aside for now.



## 3 Remove the Pump cover

Unscrew the 3 phillips screws holding the air pump cover on the machine.



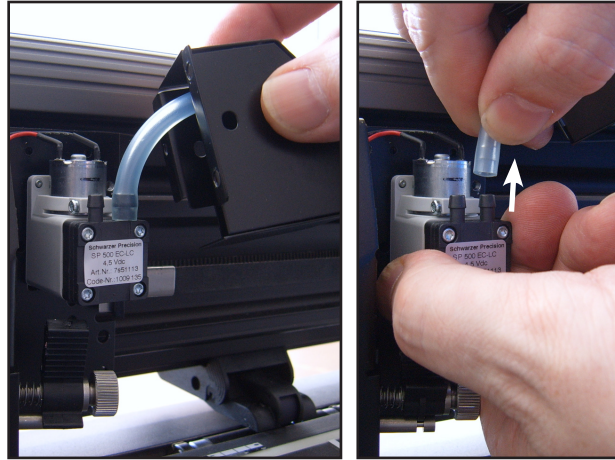
**Tools Required:**  
Phillips Screwdriver

**Applies to:**  
CrystalPress-II

**WARNING:** This procedure is written for installing a 'New' filter on the CrystalPress-II. DO NOT install an 'Old' filter on the machine as this might damage the vacuum pump.

**4 Remove the Pump air tube**

Slide the cover up the tube and then gently pull straight up on the tubing while holding the pump in place by hand. Pull the air tube from the pump cover and set the cover aside.



**5 Feed the new filter tube**

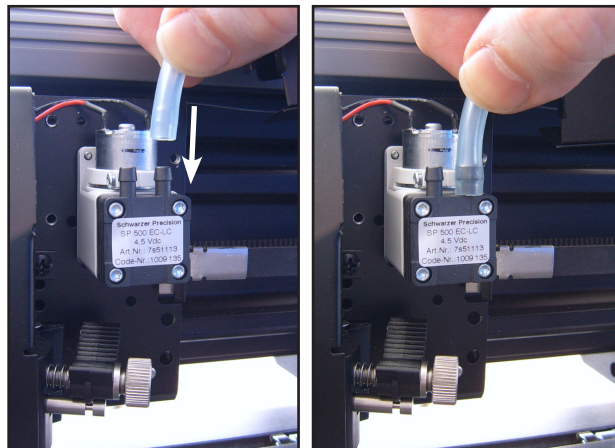
Feed the new filter tubing through the hole in the pump cover as shown.

Note: It doesn't matter which direction the new filter is installed. A new filter works in both directions.



**6 Installing tube on pump**

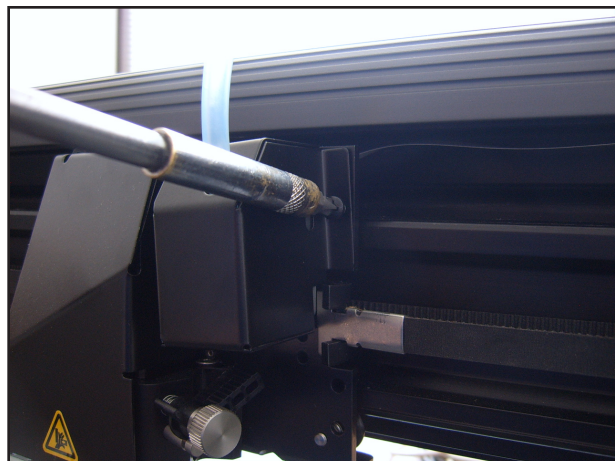
Plug the air tube into the right side barbed fitting on the pump making sure it is pushed all the way onto the fitting.



**7 Install the pump cover**

Install the pump cover using the three phillips screws.

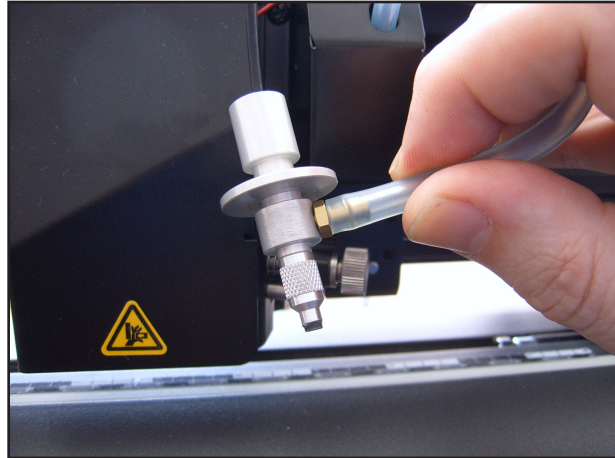
**Caution:** Make sure you don't pinch the pump wires behind the cover tabs





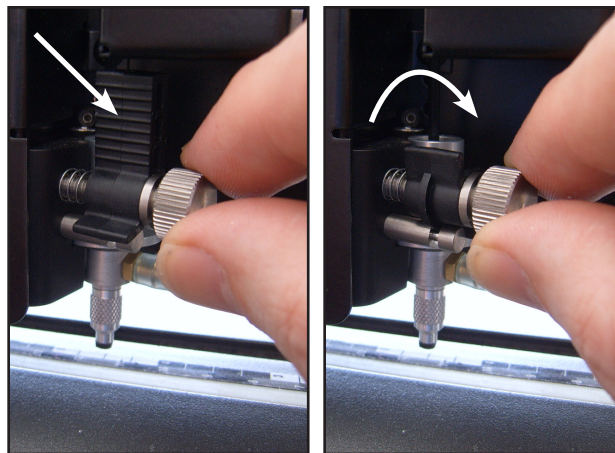
**8 Install the air tube onto the C-Stick**

Push the air tubing onto the C-Stick fitting as shown. Making sure it is pushed all the way on.



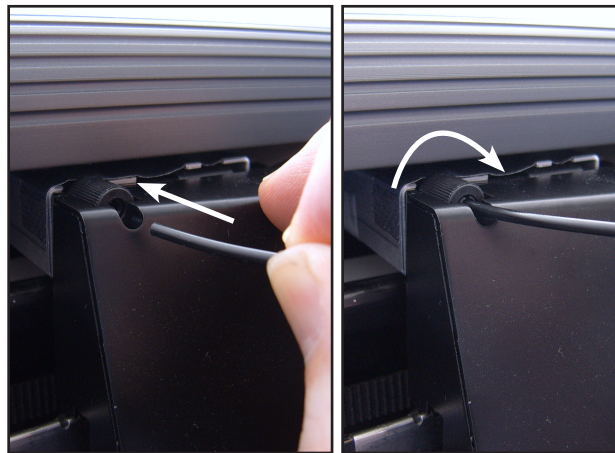
**9 Install the C-Stick**

Slide the C-Stick flange into the slot in the jaw as shown. Turn the carriage jaw clamp to the horizontal position then turn the thumbscrew clockwise to tighten.



**10 Install the Fiber Optic cable**

Slide the loose end of the C-Stick fiber optic cable into the carriage socket as shown. Make sure the cable is pushed in completely until it stops. Turn the socket nut clockwise until snug. It is not necessary to excessively tighten the nut.



**Customer Service**

Ioline Corporation is committed to providing quality service and support to our customers. If you need assistance with an Ioline product, please contact us:

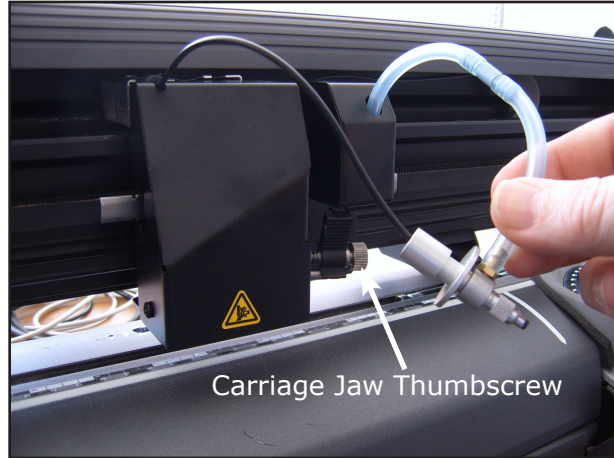
**Ioline Customer Service Department**  
Monday through Friday  
7:00 A.M. - 5:00 P.M. U.S. Pacific Time  
Voice: 1.425.398.8282  
Fax: 1.425.398.8383  
support@ioline.com  
www.ioline.com

# Carriage Cover Removal

**IOLINE™**  
14140 NE 200th St.  
Woodinville, WA. 98072  
(425) 398-8282

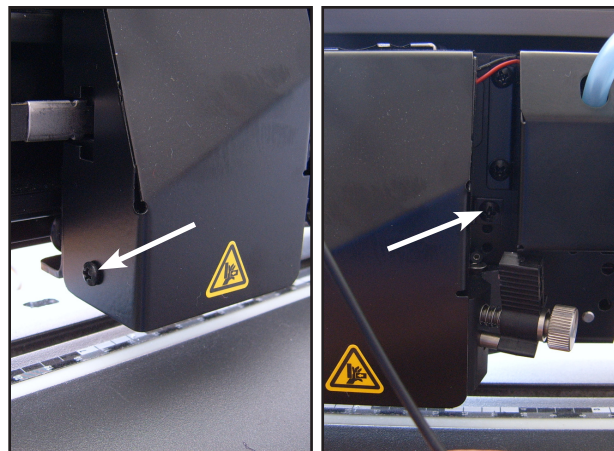
## 1 Remove the C-Stick

Turn the carriage jaw thumbscrew to the left to loosen. Remove the C-Stick from the carriage jaw as shown.

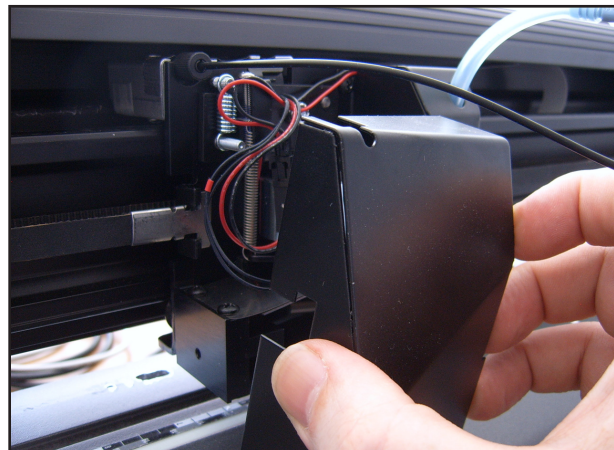


## 2 Remove the Carriage Cover

Remove the 2 black phillips screws from the right and left side of the carriage cover.



## 3 Carefully remove the cover from the carriage and set aside.



## 4 Re-installation is the reverse of the removal steps. Make sure not to pinch any wires in the cover before tightening the screws.

### Customer Service

Ioline Corporation is committed to providing quality service and support to our customers. If you need assistance with an Ioline product, please contact us:

#### Ioline Customer Service Department

Monday through Friday  
7:00 A.M. - 5:00 P.M. U.S. Pacific Time  
Voice: 1.425.398.8282  
Fax: 1.425.398.8383  
support@ioline.com  
www.ioline.com