

C-Stick Alignment

For: Ioline CrystalPress



14140 NE 200th St.
Woodinville, WA. 98072
(425) 398-8282

Alignment needs to be performed when one or more of the following issues occurs on a regular basis;

- Frequent dropped stones
- C-Stick will not pick up a stone
- Sort Wheel is not lined up with the C-Stick
- Sort Wheel continuously resets
- Frequent error lights on the machine

1 Power On

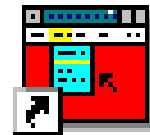
Make sure the CrystalPress is plugged in to the communication port and powered on with a green LED on the keypad. Also, make sure you have the wheels loaded in the machine and stones in the bowl.



Note: The best stones to use are ss6 or ss10 rhinestones. It is not necessary to have a transfer sheet in the machine.

2 Open Ioline Control Center

Double-Click on the **Ioline Control Center** icon. This should be located on your desktop, or in Start > All Programs > Ioline.

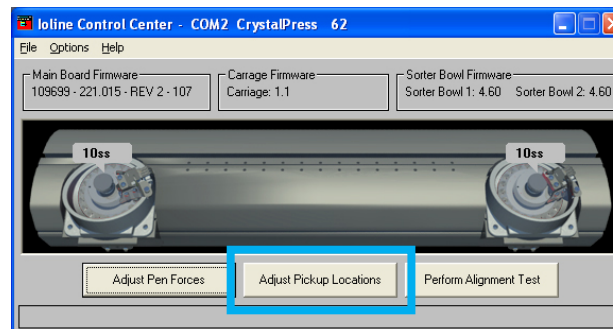


Ioline Control Center

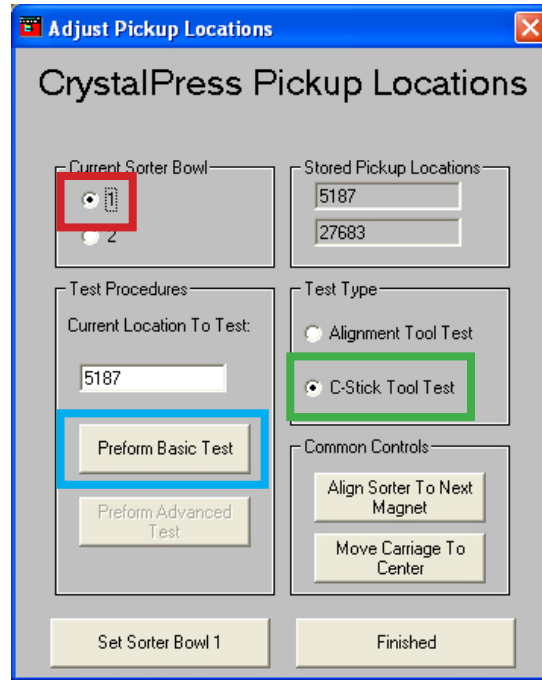
Note: You must have Ioline Control Center version 12.3 or higher to use this procedure. If your version is older go to <http://www.ioline.com/support> to download the current version.

3 Ioline Control Center Options

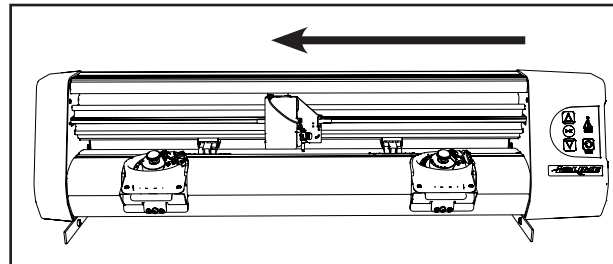
Once the Control Center is open click on the **Adjust Pickup Locations** button.



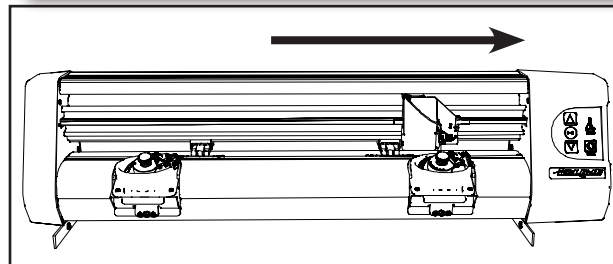
- 4 Performing the test**
 Once the **Adjust Pickup Locations** window is open make sure the **C-Stick Tool Test** button is checked. Under the **Current Sorter Bowl** section, check the bowl number you want to test. Make sure you are clear of the machine and click the **Perform Basic Test** button.



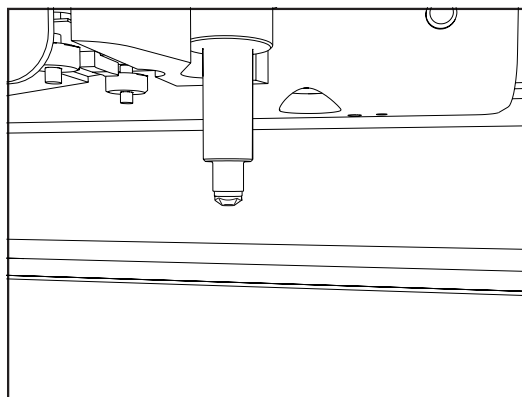
- 5 Performing the test**
 The head on the machine will move quickly from the bowl to the middle of the machine...



...then back to the bowl.



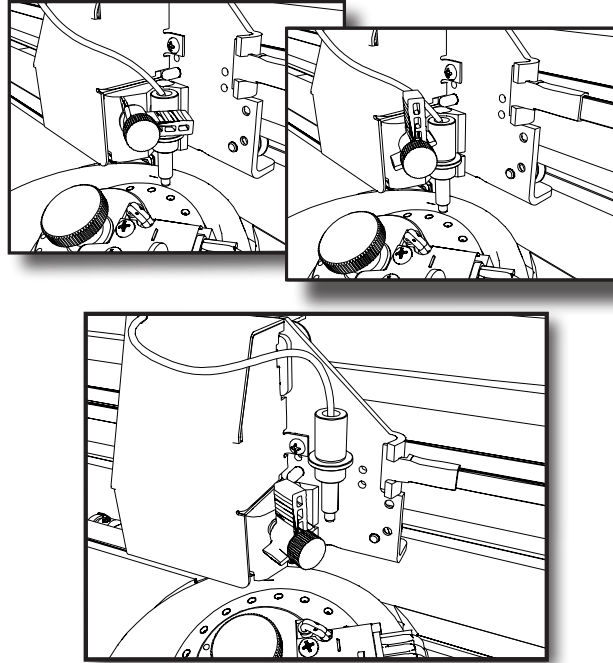
- 6 Pick Up**
 Once the head moves to the pickup location the tool will drop slowly and pick up a stone.



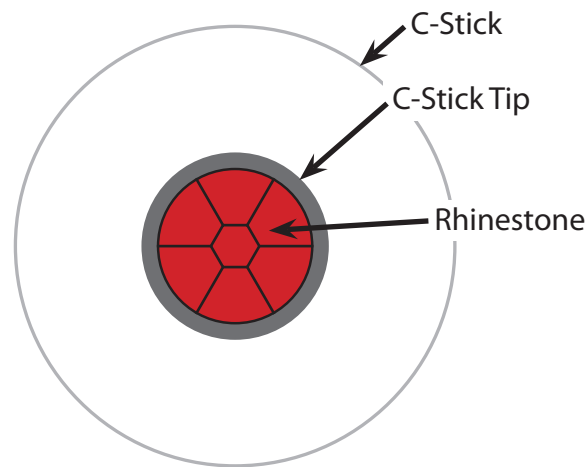
Note: If there is not a stone in the pickup location you can open and close the wiper arm clamp to force the wheel to turn. Once there is a stone in the pickup location perform the test again.

Remove the C-Stick

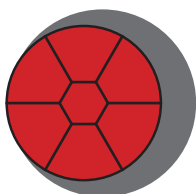
- 7 Once the stone is on the tip of the C-Stick, loosen the Thumb-screw on the carriage and rotate the clamp to the vertical position. Carefully remove the C-Stick from the carriage. Use the black cable coming out of the top of the C-Stick as a holding position to keep it straight when removing the tool.

**Rotating the C-Stick**

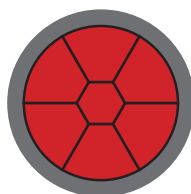
- 8 Slowly rotate the tip of the C-Stick toward you so you can see the tip with the stone on it.

**Looking at the Stone**

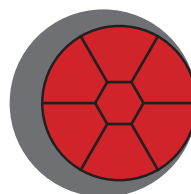
- 9 Look closely at the stone as it sits on the tip of the C-Stick. If the tool is aligned perfectly it should be directly in the middle of the tip. Too far to one side will result in frequent dropped stones. Remember which way the stone is and place the C-Stick back in the machine. Make sure you tighten the thumbscrew.



Too far left



Centered



Too far Right

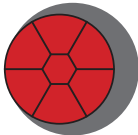
Note: This procedure deals with Side-to-Side alignment of the tool. If the stone is high or low on the tip of the C-Stick, please contact Ioline Tech Support for instructions.

Changing the numbers

- 10** Go back to the Ioline Control Center **Adjust Pickup Locations** window.

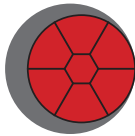
In the **Test Procedures / Current Location to Test** section you will be typing a new number in this field.

If the Stone looked like this:



Raise the number by 5
 (example: If 5187 is the current number, type 5192)

If it looked like this:



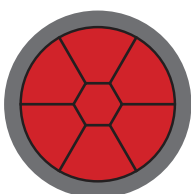
Lower the number by 5
 (example: If 5187 is the current number, type 5182)

Setting the location

- 11** Click the **Set Sorter Bowl** button to set the new value.

Testing the new location

- 12** Click the **Perform Basic Test** button to test the new pickup location. Go back to step 5 and follow the procedure again. Repeat this until the stone looks like this.



If you need to align another bowl, go back and follow this procedure from Step 4.

